

The Globe

Spring 2009

UBC PT CLINICAL EDUCATION NEWSLETTER



**WE ARE IN NEED
OF MORE
CLINICAL SITES!!**

See reverse for
more information...

Our "Puzzling" New Look!

In an effort to highlight the importance of Clinical Education within the Department of Physical Therapy, we have come up with a "brand" that represents us. The **puzzle piece** symbolizes the fact that Clinical Education is a critical piece of a PT student's education, and the **globe** symbolizes the diverse world of clinical placements.

Something that will give us a face to the community is our new banner. It's been a real "family affair," as our models were: UBC PT students Meghan Curle, Teryn Buna, Jonathan Yiu, Trevor Morton, and Pantea Zarrinkamar; Carolyn's mother Willa; and little Jack, with his mom, our MPT Program Coordinator Alison Greig. We think they were all very photogenic!

Look for it (and us!) at various events around the province in the near future!



THE UNIVERSITY OF BRITISH COLUMBIA
Department of Physical Therapy

CLINICAL EDUCATION

the
**critical
piece**



Physical Therapy
UBC

Welcome!

Welcome to the first issue of our revitalized PT Clinical Education newsletter, "The Globe!" This twice-yearly newsletter will provide updates and information about the Clinical Education Program at UBC, and offer a forum for sharing and news exchange.

Starting in 2010, our MPT Program will jump to an enrollment of 80 students. That means the number of placements required annually in BC will have risen from 240 in 2005 to 480 in 2010! In order to meet the increased demand for placements we will be looking for new sites and new models of student placement, and also means there is an increased need to keep in close touch with the clinical community.

This newsletter is part of a larger strategy to keep us more in touch with you and hopefully you more in touch with us. We welcome your ideas, submissions, and feedback. Let us know what you would like to see included and to hear more about!



Comments?

Please email: carolyn.andersson@ubc.ca

[Our new banner image >](#)

Meet the ClinEd Team...



Sue Murphy
ACCE

As the Academic Coordinator of Clinical Education (ACCE), Sue leads the Clinical Education Team. As well as having responsibility for the overall planning and direction of the Clinical Education Program, Sue prepares students for fieldwork and provides a link between clinical sites and the department. Sue moved into her current position at UBC in July 2008. She would be delighted to hear from you!

sue.murphy@ubc.ca



Carolyn Andersson
Clinical Education Officer

The Clinical Education Officer provides invaluable backup and support to the ACCE. Carolyn is responsible for multiple aspects of the Program, including coordination of Clinical Educator workshops, upkeep of our web page, and production of this newsletter and other student and marketing materials for the Program. She also coordinates the Clinical Education Committee meetings. Carolyn started temporarily in January 2009 but as of June 1 has accepted the position full-time!

carolyn.andersson@ubc.ca

Helen Chang
Clinical Placement Assistant

Helen Chang is our resident "HSPnet" specialist. As the logistical coordinator of student placements (including the call for offers, affiliation agreements and other paperwork required for each placement in BC), Helen fulfills a vital role in keeping student placements running smoothly and ensuring that the sites are supported. Helen has many years of experience at UBC and joined the department in July 2008.

pt.placements@ubc.ca



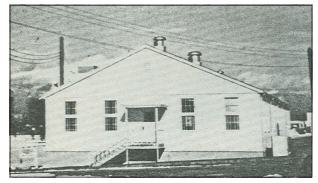
From L to R: Dean of Medicine, Gavin Stuart, MPT Student Meghan Curle, Premier Gordon Campbell, Sydney Friedman, UBC President Stephen Toope, and Audiology & Speech

Official Opening of the Newly Renovated Friedman Building

On Monday, March 23, 2009 the doors of the Friedman building were **officially** opened! Department of Physical Therapy Interim Head Dr. Brenda Loveridge (along with Director of the School of Audiology and Speech Sciences, Dr. Valter Ciocca) welcomed guests from the Government of BC, the University, and the Physical Therapy community. Special guest was Dr. Sydney Friedman,

Professor and Anatomy Department Head from 1950 until 1981.

Renovations of the site were made possible via *UBC Renew*. This program revitalizes older buildings, making each one more sustainable. PT's two floors offer state-of-the-art teaching labs, breakout rooms, student study facilities and a multi-purpose gym.



We've come a long way from "the hut" (above) to our state-of-the-art plinth labs (below).



ClinEd Teaching Tip

Do you have some quieter periods during the placement? What should you do with your student??

A great suggestion we've received is to start a "job box" and fill it with odd jobs and assignments that are normally done when things are quieter—for example literature searches or development of educational materials for patients/clients. Other ideas include shadowing other professionals, following a client through his/her day ("a day in the life of a patient"), or arranging visits to other clinical areas (e.g., Home Care).

WHAT'S NEW?

CPI (evaluation) forms

Hang in there, help is coming!

We appreciate the frustration that many clinicians have with this form. Discussions are currently underway at a national level to look at alternative evaluation tools for piloting across Canada. The challenge is to find an evidence-based tool for student evaluation which has been proven to be reliable and valid, is suitable for the Canadian curriculum, and is translatable into French. We hope to have a further update on this initiative shortly.

Please note the **new procedure for returning completed CPIs** (at the end of the placement). In order to reduce the number of lost or missing forms, please give the student a copy and mail the **originals** to **Helen Chang**. If you wish to keep a copy of the CPI at your site you must obtain written permission from the student. Also, please ensure the supervisor(s) and the student sign the evaluations before returning them to our office.

Look for our next issue in the fall of 2009...

Update on "Shadow Days"

Once again this fall we will be sending our first-year students out to 'shadow' clinicians in Lower Mainland facilities. The purpose of the shadow experience is to familiarize students with the clinical setting prior to their first placement in the spring. This year, due to increased numbers, students will complete 16 hours of shadowing over four mornings during the fall term.

Thank you to all the facilities that support this part of the Clinical Education Program.

October 2008 Symposium

Last fall key stakeholders were invited to a two-day 'think tank' on PT Clinical Education at UBC. The report from the symposium has just been completed and is available on the Department website.

Work on implementing the recommendations from the workshop has already begun and will continue over the coming months.

Questions, Comments and feedback on the report are welcome and should be sent to the ACCE.

Our new PACE Committee

March saw the inaugural meeting of the *Provincial Advisors for Clinical Education (PACE) Committee*. Comprised of public and private reps from all health authorities in the province, as well as key representatives from other groups (PABC, CPTBC), the mandate of this committee is to provide a vehicle for communication, problem-solving and the generation of ideas in relation to the Clinical Education program.

In the coming months Regional Advisory Clinical Education committees will be initiated to allow front line input from clinicians into the Clinical Education Program. If you would like to participate or have questions about the committees please contact Sue or Carolyn.


New clinical sites needed!

The newly revised **Clinical Educator Workshop** is *on the road!* This workshop is strongly recommended for those new to taking PT students, as well as those who would like a refresher. The workshop includes an overview of the current MPT curriculum as well as helpful information on how to plan and evaluate a clinical learning experience.

We are currently working on a provincial schedule for workshops, with the goal of offering workshops regularly around the province. For details on workshops in your area please contact

Carolyn Andersson.

Department of Physical Therapy

 Faculty of Medicine
The University of British Columbia
212 - 2177 Wesbrook Mall
Vancouver, BC V6T 1Z3

Main Phone: 604-822-8225
Main Fax: 604-822-1870

www.physicaltherapy.med.ubc.ca