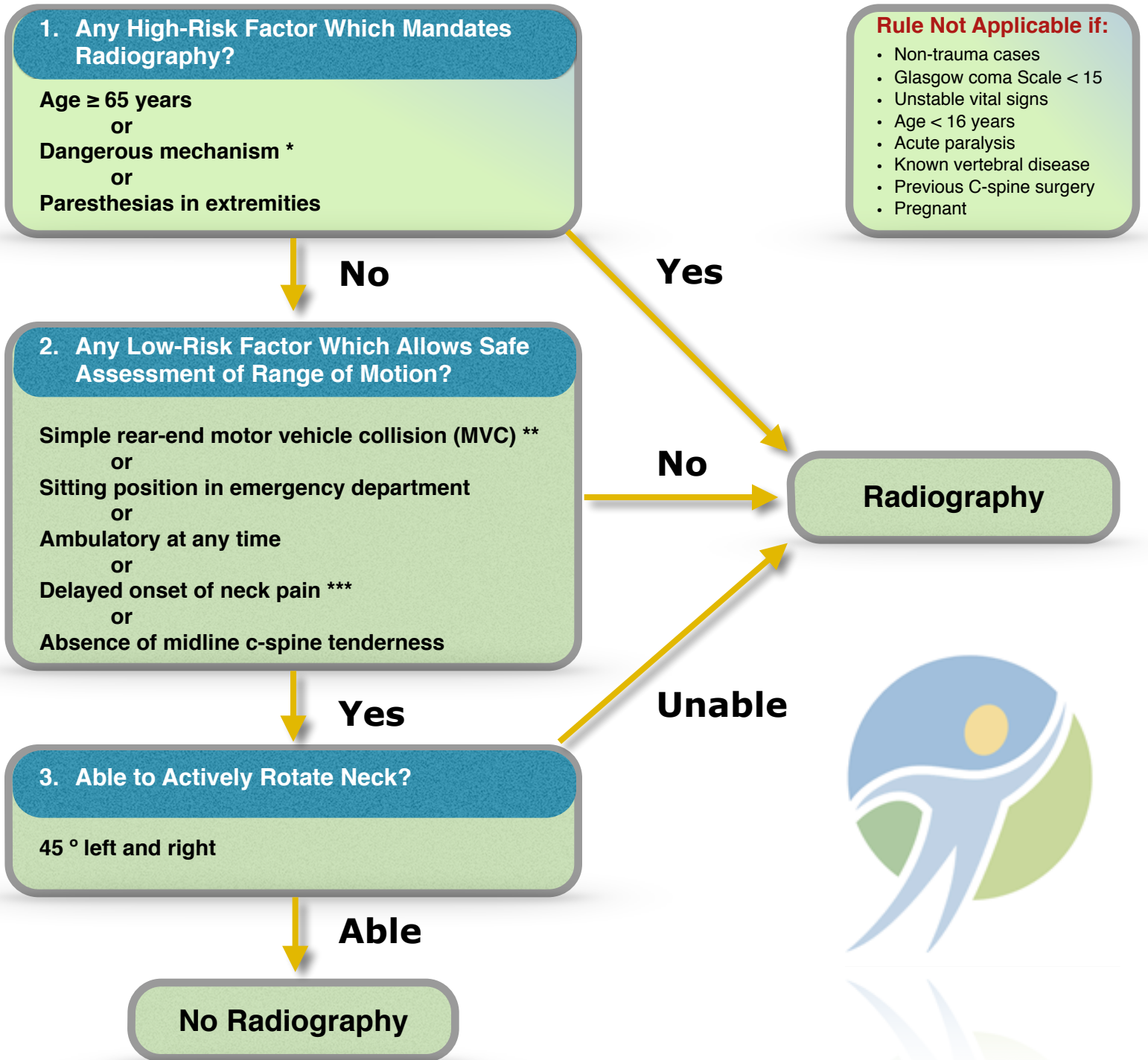


Canadian C-Spine Rule

For alert (Glasgow coma scale = 15) and stable trauma patients where cervical spine injury is a concern



Rule Not Applicable if:

- Non-trauma cases
- Glasgow coma Scale < 15
- Unstable vital signs
- Age < 16 years
- Acute paralysis
- Known vertebral disease
- Previous C-spine surgery
- Pregnant



***Dangerous Mechanism**

- Fall from elevation ≥ 3 feet or 5 stairs
- Axial load to head, e.g. diving
- MVC high speed (> 100 km/hr), rollover, ejection
- Motorized recreational vehicles
- Bicycle struck or collision

****Simple Rear-end MVC Excludes**

- Pushed into oncoming traffic
- Hit by bus or large truck
- Rollover
- Hit by high speed vehicle

*****Delayed**

- Not immediate onset of neck pain

The developer of the rule:
Ian G. Stiell, MD, MSc, FRCPC
 Professor and Chair, Department of Emergency Medicine, University of Ottawa
 Distinguished Professor and University Health Research Chair, University of Ottawa
 Senior Scientist, Ottawa Hospital Research Institute